



Diagnosis of Viral Diseases in Pepper (*Capscium sp.*) within Bouaké and Abidjan localities and Characterization of Associated Begomoviruses

Koutoua SEKA ^{a*}, Attoumou Lionel Franck Hervé KOFFI ^a
and Mah Eba ^a

^a Plant Health Unit, Plant Production Research Center of Vegetal Production, Nangui ABROGOUA University, 02 BP 801 Abidjan 02, Ivory Coast.

Authors' contributions

This work was carried out in collaboration among all authors. All authors read and approved the final manuscript.

Article Information

DOI: <https://doi.org/10.9734/ijpss/2024/v36i105060>

Open Peer Review History:

This journal follows the Advanced Open Peer Review policy. Identity of the Reviewers, Editor(s) and additional Reviewers, peer review comments, different versions of the manuscript, comments of the editors, etc are available here: <https://www.sdiarticle5.com/review-history/123902>

Original Research Article

Received: 25/07/2024

Accepted: 27/09/2024

Published: 03/10/2024

ABSTRACT

Objective: This study aims at gaining a better understanding of Pepper Begomovirus diseases in order to improve yield in a sustainable way.

Study Design: Demonstrate the symptoms associated with viral diseases, as well as the agent responsible for this disease in peppers, in order to set up an effective and efficient control method.

Location: Abidjan and Bouaké (Côte d'Ivoire); Study duration: 12 months

Methodology: A phytosanitary survey was carried out in Abidjan and Bouaké, and symptomatic samples were collected. A total of 60 samples with single and complex viral disease symptoms were observed and collected from the two study areas. Results: The severity of symptoms observed was virtually identical in both localities, in contrast to prevalence, which was higher in the Bouaké

*Corresponding author: E-mail: koutouaseka@yahoo.fr, koutouaseka@gmail.com;

locality. Two of the samples from Bouaké reacted positively to the PCR test for Begomovirus. The *Pepper Yellow Vein Mali Virus* was thus identified as a potential cause of the viral diseases observed. The sequences of this virus recorded a similarity rate of 97.16 and 99.42% with its homologues found on GenBank under accession numbers MH460532 and MH778694, respectively. **Conclusion:** A clear identification of pepper pathogenic viruses could better guide the control of these viral diseases.

Keywords: *Capsicum sp.*; viral diseases; diagnosis; molecular characterization.

1. INTRODUCTION

Pepper (*Capsicum* spp.) is a vegetable of the Solanaceae family. Classified as one of the first food spices, Pepper is one of the 40 most widely produced vegetable species worldwide [1]. Today, pepper is grown all over the world and is one of the most widely consumed vegetables, for its several virtues. It contains a yellowish oil with a hot taste, and is rich in minerals and vitamins A and C. It is a popular fruit that has been grown and consumed for millennia and is found today in most parts of the world for food and also used as traditional medicine; Studies has confirmed the anti-inflammatory property of pepper [2]. *Chilli pepper* have potential as anti-tumor, anti-cancer, antioxidant, anti-obesity agents [3]. Worldwide yield of pepper is estimated at over 31 million tons [4]. The African continent is the third producer with a rate of 8.8% behind the Asian and American continents [4]. The world's main pepper producers are: China with 14 million tons, Mexico with 1.8 million tons and Turkey with 1.7 million tons [5]. In Africa, the top five producers are Nigeria, Ghana, Algeria, Ethiopia and Tunisia. With 500 000 and 110 000 tons per year respectively, Nigeria and Ghana are the biggest pepper producers in West Africa [4]. In Côte d'Ivoire, pepper is grown all over the country and sold fresh or dried in national and international markets. Pepper price per kilogram varies from 1000 to 1100 francs, depending on the season and the Ivorian markets [5]. The crop generates substantial income for many families, with a yield estimated at 32,900 tons a year [4]. The increase in pepper yield nationwide since 2015 is partly due to the increase in acreage [6,7]. This is because several factors, such as crop cycle staggering, climatic disturbances, technical itineraries that have remained traditional and the presence of pests and diseases, contributed to the decline in its yield [8]. Among all these diseases, the most damaging are viral diseases, as some viruses cause a total yield loss. They occur as blistering, mosaics, necroses, fruit malformation,

discoloration, viral complexes [9]. The spread of these viruses is carried out mechanically or by several vectors, including insects [10]. As the symptoms of Begomovirus diseases resemble those of other viral diseases, this study aims at gaining a better understanding of pepper Begomovirus diseases in order to improve its yield in a sustainable way. More specifically, it aims at determining the symptomatology of pepper viral diseases, assess epidemiological parameters (prevalence and severity) and characterize the Begomoviruses associated with the symptoms.

2. MATERIALS AND METHODS

2.1 Phytosanitary Survey and Sample Collection

In the survey areas, symptomatology was determined by visual diagnosis based on observation of symptoms on pepper leaves. The different virus symptoms observed on the leaves were described. The description took into account the shape, coloration and appearance of infected leaves. Random sampling was carried out in 3-month-old fields in each of Abidjan and Bouaké localities. Samples were taken from plants showing symptoms of viral infection. Diseased plants were photographed and 60 samples were collected. Each leaf sample collected was stored in a paper envelope and identified by a code (number specifying the origin and order of the sample). The samples were transported to the laboratory and oven-dried at 45°C for 48 hours for further processing.

2.2 Determining the Prevalence and Severity of Viral Disease Symptoms

2.2.1 Determining the prevalence of viral disease symptoms

The percentage of plants exhibiting viral disease characteristic symptoms was determined in relation to the total number of infected plants in the plot. The average prevalence was calculated using the following formula [11]:

$$P_m (\%) = \frac{P_{is}}{P_{ti}} \times 100 \quad (1)$$

P_m : mean prevalence

P_{is} : number of plants infected by viral diseases

P_{ti} : total number of plants visited in the locality

2.2.2 Determining the severity of viral disease symptoms

A severity score was assigned according to the scale of [12] ranging from 1 to 5, where 1 implies no visible symptom and 5 denotes more than 75% of leaves attacked. Severity index was determined as follows

$$IS = \frac{\sum(X_i \times N_i \times 100)}{5 \times N_t} \quad (2)$$

IS: Severity index of the symptom considered

X_i : Score attributed to a symptom

N_i : Number of plants of the same species exhibiting the symptom

N_t : Total number of plants exhibiting symptoms or not

2.3 Molecular Identification of the Main Viruses Associated With Symptoms

2.3.1 DNA Extraction and amplification using the PCR technique

Extraction was carried out using the viral DNA extraction protocol kit DNeasy plant (Qiagen) version 14 April 2019. PCR (Polymerase Chain Reaction) makes it possible to obtain a very large number of copies of a DNA segment and an exact volume. The principle consists in using a pair of primers (short DNA sequences of 18 to 24 nucleotides) which hybridize to complementary sites located in inverted orientation on the two strands of the target DNA and which frame the region to be amplified [13]. Two primers Cluster 4 F342 (5'-TATMATCATTTCACBCCVG-3') and Cluster 4 R1032 (5'-GCATGTACATGCCATATAC-3') were used for universal PCR detection of Begomoviruses. The solution mix consisted of water (5.9 μ l x n), primer pair ("forward" 0.5 μ l x n and "reverse" 0.5 μ l x n) and Taq (3.6 μ l x n). The solution thus prepared was dispensed into the 1 μ l, that is, 10.5 μ l per well. Next, 2 μ l of DNA were added for a final volume of 12.5 μ l. The whole set was placed in QIAXCEL (QIAGEL) and the positive samples migrated at a molecular weight ranging from 690 to 750 Pb. PCR amplicons obtained with the digested primers (Cluster 4 Cl) were sequenced using

the Sanger sequencing method by Macrogen (Europe).

2.3.2 Phylogenetic analysis

The sequences were edited and assembled using Mega 10 software. Nucleotide sequences were subjected to a BLAST search for preliminary species assignment. Alignments of query sequences with representative Geminivirus sequences available from Genbank were performed using the alignment tool available in Geneious Mega 10 and edited with the naked eye. In order to assign sequences to known viral species and strains, pairwise nucleotide sequence identity comparisons were performed with pairwise gap deletion. The maximum likelihood (ML) phylogenetic tree was constructed using this software.

2.4 Statistical Analysis

The data obtained in this study were analyzed using statistical software (Statistica 7.1). The Kruskal wallis rank test was used to compare the prevalence and mean severity of single and complex symptoms observed in each locality. In the event of a significant difference at 5% threshold, the Mann-Whitney test was used to determine the different homogeneous groups.

3. RESULTS

3.1 Observed Symptoms

A variety of viral disease symptoms, including color changes and organ alterations, were observed in the areas surveyed. Color changes were characterized by interveinal discoloration and mosaics, while organ alterations were characterized by blistering and leaf curling. These symptoms were referred to as single symptoms. The combination of two or more single symptoms was referred to as complex symptoms. Thus, complex symptoms such as blistering+curling, blistering+mosaic, mosaic+curling, mosaic+discoloration and interveinal discoloration + curling were recorded (Fig. 1).

3.2 Prevalence and Severity of Viral Disease Symptoms

3.2.1 Prevalence of symptoms in surveyed localities

Prevalence of single symptoms: The prevalence of pepper viral disease single symptoms varied not only from one locality to another, but also

from one symptom to another ($P < 0.05$). Thus, blistering and leaf curl symptoms were more prevalent in Abidjan (16.66% and 13.36%) than in Bouaké (10.05% and 6.66%). However, the prevalence of mosaic and interveinal discoloration were statistically similar in both localities ($P > 0.05$). The prevalence of interveinal discoloration was the lowest in both localities (Table 1).

Prevalence of complex symptoms : As with single symptoms, the prevalence of complex symptoms varied depending on the localities and symptoms ($P < 0.05$). In Abidjan, the highest prevalence (10.07%) was noted for Blistering + leaf curl symptoms. In Bouaké, in contrast, the highest prevalence (30.02%) of pepper viral symptoms was noted with the blistering+mosaic complex. However, symptoms of interveinal discoloration+curling showed the lowest

prevalence (3.33%) in both localities. All complex symptoms recorded the highest prevalence in Bouaké, unlike interveinal discoloration + curling symptoms (Table 2).

Overall, the prevalence of single symptoms was statistically similar in the two localities surveyed, while that of complex symptoms was higher in Bouaké (16.68 %) than Abidjan (6.68%) (Table 3). A significant difference in both localities with regard to these complex symptoms ($P < 0.05$).

3.2.2 Severity of symptoms observed

Symptom severity was ranked from 1 to 5 in both localities. In Abidjan locality, the mean severity of single symptoms, more precisely blistering, was the highest, with a score of 5, and the lowest, with a score of 2, was obtained with leaf curl. In



Fig. 1. Viral disease symptoms observed in both study localities

A and B: Single symptoms, C and D: Complex symptoms

Table 1. Prevalence of single symptoms in surveyed areas

Single symptoms	Mean prevalence \pm Standard error (%)		Statistics	
	Abidjan	Bouaké	H	P
Blistering	16.66 \pm 2.46 ^{a1}	10.05 \pm 0.31 ^{a2}	3.86	0.04
Curling	13.36 \pm 1.17 ^{ab1}	6.66 \pm 0.66 ^{b2}	3.86	0.04
Mosaic	10.03 \pm 0.59 ^{b1}	10.03 \pm 0.53 ^{a1}	0.04	0.83
Interveinal discoloration	3.33 \pm 0.68 ^{c1}	3.33 \pm 0.53 ^{c1}	0.04	0.83
Statistics				
	H	9.67	9.36	
	P	0.02	0.02	

In the columns and lines, the values topped by the same letters and numbers respectively are not statistically different at 5% threshold according to the Kruskal walis ANOVA test.

Table 2. Prevalence of complex symptoms in surveyed areas

Complex symptoms	Mean prevalence \pm Standard error (%)		Statistics	
	Abidjan	Bouaké	H	P
Blistering + curling	10.07 \pm 0.88 ^{a2}	23.33 \pm 1.29 ^{b1}	3.86	0.04
Curling + mosaic	6.67 \pm 0.61 ^{b2}	10.04 \pm 0.92 ^{c1}	3.86	0.04
Blistering + mosaic	6.67 \pm 1.72 ^{b2}	30.02 \pm 2.36 ^{a1}	3.86	0.04
Interveinal discoloration + curling	3.33 \pm 0.31 ^{c1}	3.33 \pm 0.21 ^{d1}	0.04	0.83
Statistics				
	H	8.74	9.97	
	P	0.03	0.01	

In the columns and lines, the values topped by the same letters and numbers respectively are not statistically different at 5% threshold according to the Kruskal walis ANOVA test.

Table 3. Prevalence of viral disease symptoms on pepper in Bouaké and Abidjan localities.

Localities	Mean prevalence of single Standard symptoms \pm error (%)	Mean prevalence of \pm complex symptoms Standard error (%)
Bouaké	7.52 \pm 1.61 ^a	16.68 \pm 0.80 ^a
Abidjan	10.85 \pm 0.87 ^a	6.68 \pm 3.24 ^b
F	3.32	9.00
Statistics P	0.08	0.00

In the columns, the values topped by the same letters are not statistically different at 5% threshold according to Fisher's LSD test

terms of complex symptoms, the lowest mean severity was obtained with leaf curl + interveinal discoloration symptoms, with a score of 3, while it was highest with leaf curl + blistering symptoms, with a score of 5. Similarly, in the Bouaké locality, the lowest mean severity of single symptoms was obtained with blistering (score 2), while it was higher with blistering (score 4). In terms of complex symptoms, the lowest mean severity (score 2) was obtained for leaf curl+mosaic symptoms, while it was higher (score 5) with blistering+mosaic symptoms. In both localities, the mean symptom severity index ranged from 12.10 in Abidjan to 13.26 in Bouaké (Table 4). However, statistical analyses revealed no significant difference between the symptoms observed ($P > 0.05$).

3.3 DNA Amplification Using the PCR Technique

Among a total of 60 samples tested, DNA from two samples showed a fragment of the expected

size (750 bp) after PCR amplification (Fig. 2). These included samples with laboratory codes CI 250 and CI 251, collected in the Bouaké areas (Fig. 3). Symptoms of infection occurred by two complex symptoms which were mosaic + blistering for sample CI 250, and interveinal discoloration + curling for sample CI 251. These symptoms were observed on almost all the leaves of infected plants.

3.4 Results of Phylogenetic Analysis

Two symptomatic samples collected in Bouaké (CI 250 and CI 251) reacted positively to the PCR test for Begomoviruses. The characteristics of the *Pepper Yello Vein Mali Virus* (PepYVMLV) sequences detected in these two samples are shown in Table 5. The two virus sequences were grouped together on a tree rooted on ToLCV [AU: 08] identified by code S53251 on Genbank. Thus, the PepYVMLV sequence from sample CI251, slightly closer to the root, was related to

Table 4. Symptom severity index in Bouaké and Abidjan localities

Localities	Mean Severity index \pm Standard error	Statistics	
		F	P
Bouaké	13.26 \pm 1.14 ^a	0.03	0.51
Abidjan	12.10 \pm 1.32 ^a		

In the columns, the numbers bearing the same letters are not statistically different at 5% threshold according to Student's t-test

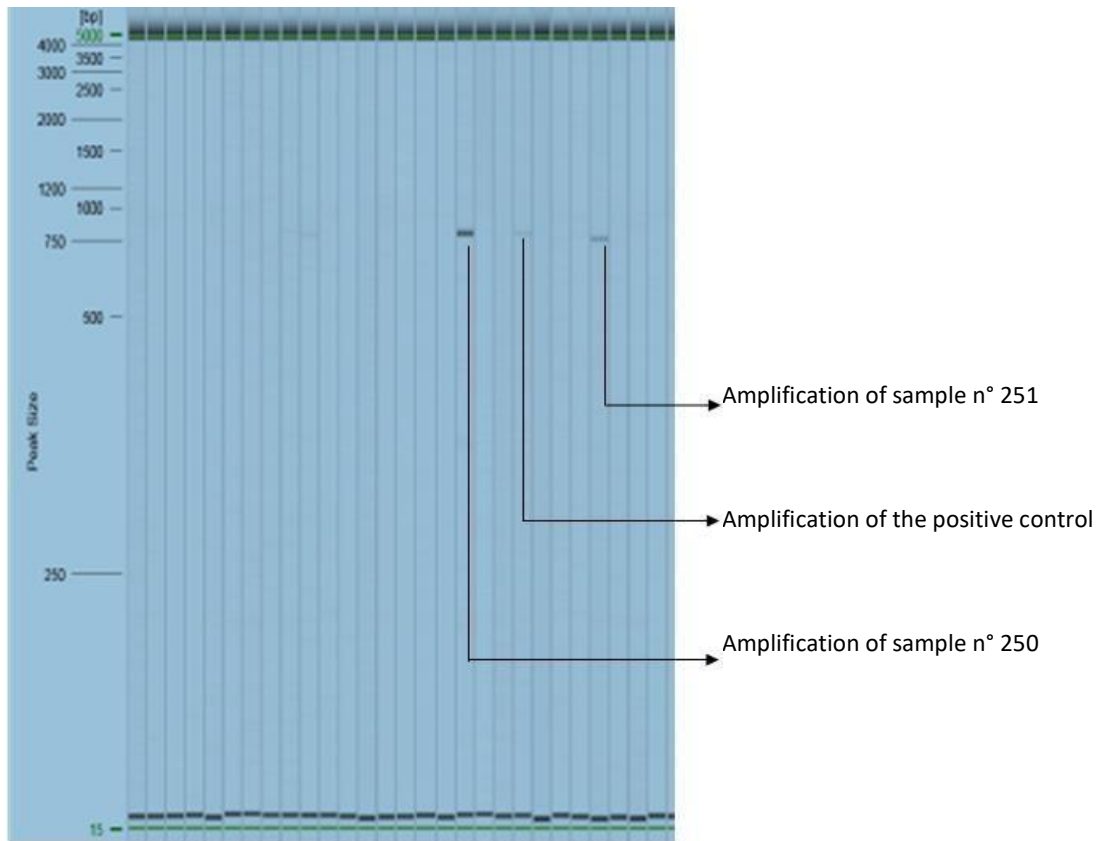


Fig. 2. Amplicons of samples that reacted positively to PCR for Begomovirus detection



Fig. 3. Symptomatic pepper samples that reacted positively to a pair of primers directed against Begomoviruses

A: Sample CI 250 (mosaic + blistering) B: Sample CI 251 (interveinal discoloration + curling)

Table 5. Sequence characteristics of *Pepper Yellow Vein Mali Virus* found on pepper in Bouaké.

Code	CI250	CI251
Name of similar sequences	<i>Pepper yellow vein Mali virus</i> [Burkina Faso:Sakabi:pepper:72B4:2013]	<i>Pepper yellow vein Mali virus</i> [Côte d'Ivoire:Ferkessedougou:CI11_1:2017]
Acronyms for similar sequences	PepYVMLV-[BF:Sak:Pep:72B4:13]_MH778694	PepYVMLV-[CI:Fer:CI11:1:17]_MH778694
% identity	99.42 %	97.16 %
Similar accession	MH77694	MH460532

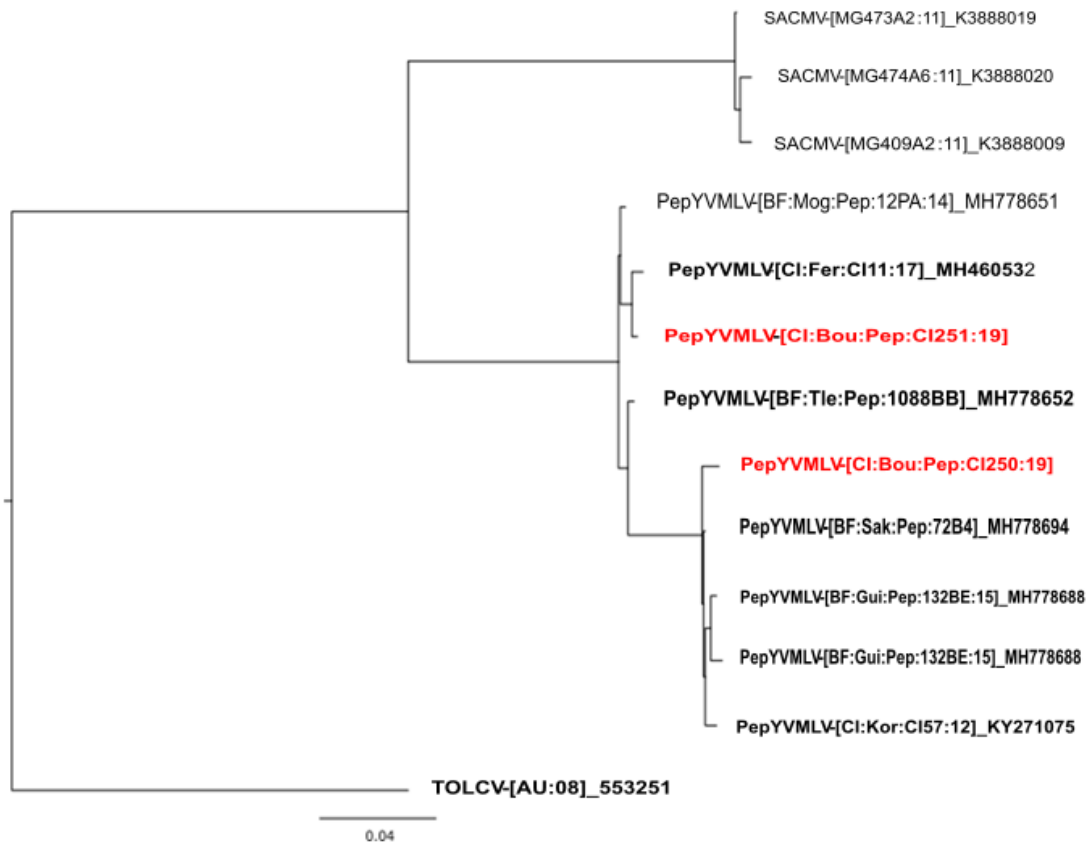


Fig. 4. Phylogenetic clustering of *Pepper Yellow Vein Mali Virus* sequences found on pepper in the Bouaké locality in relation to some sequences existing on Genbank

the PepYVMLV sequence detected at Ferkessédougou in Côte d'Ivoire and found on Genbank with code MH460532. In contrast, the other PepYVMLV sequence from sample CI250, a little further from the root, is more closely related to the PepYVMLV sequence detected in Burkina Faso and found on Genbank under code MH778694 (Fig. 4).

4. DISCUSSION

A variety of symptoms caused by viruses have been observed on pepper plants in Bouaké and Abidjan localities. These included

single and complex symptoms. This variability of viral disease symptoms was also recorded by [14] during his work on viruses infecting pepper in Burkina Faso. Prevalence showed that single viral disease symptoms were more recurrent in Abidjan locality than in Bouaké. However, in terms of complex symptoms, the most recurrent were in Bouaké locality. However, statistical analyses revealed no significant difference between the different types of viral disease symptoms in both localities. This may be explained by the presence of the same insect vectors, the period of visit, the surface area of the plots which are too small, or by the fact that

environmental conditions have no influence on viral disease evolution. This contradicts the assertion [15] made about plant viral diseases that symptoms vary with environmental conditions. As for severity, in terms of single and complex symptoms, the value of the severity index was virtually the same in both localities, except that in Bouaké locality, the severity was slightly higher than in Abidjan. This higher level of infection in Bouaké locality is thought to be due to the existence of numerous reservoir hosts in the form of weeds and diseased plants. From these sources of primary inoculum, the insects will spread the viruses to the plots. Thus, a large-scale attack by these insects will increase disease severity.

Among 60 samples collected, only two samples collected from Bouaké were tested positive to molecular analysis in the presence of universal Begomovirus primers. These included samples CI 250 exhibiting blistering + mosaic symptoms and CI 251 exhibiting curling + internervial discoloration symptoms. These results are in line with the work of [14] and [16], who assert that these symptoms are specific to Begomoviruses. However, according to [17], the presence of a symptom complex on the same pepper plant would be due to the antagonistic action of at least two viruses, since the way in which these symptoms occur suggests that they would be caused by the presence of one or more viruses. These pepper plants showed several symptoms at the same time, which would mean that other viruses or environmental factors were interacting with the virus, and that the latter was not solely responsible for the symptoms observed on pepper plants. The PepYVMLV sequences detected in Bouaké are closer to those detected in Côte d'Ivoire in Ferkessédougou and Burkina Faso. These sequences exist on Genbank under codes MH460532 and MH778694, respectively. The presence of this virus on both sides of the Ivorian-Burkinabé border could be explained by exchanges of plant material between these two countries.

However, some samples showing symptoms tested negative. In fact, the symptoms observed on these samples were similar to those caused by Begomoviruses, but molecular analyses detected no presence of Begomovirus. These results are justified by the fact that these viruses are caused by other groups of viruses, causing symptoms similar to those caused by Begomoviruses. These results contradict those obtained by [14], who were able to identify the Begomoviruses responsible for pepper diseases

in Burkina Faso, and those obtained by [18] on the discovery of new Begomovirus species in Madagascar and Mayotte.

5. CONCLUSION

The phytosanitary survey carried out in Abidjan and Bouaké localities recorded a variety of single and complex symptoms of viral diseases on pepper plants. A high prevalence of these symptoms was noted in Bouaké, in contrast to Abidjan. However, the level of disease or severity of symptoms was identical in both localities. Molecular analyses using Polymerase Chain Reactions confirmed the presence of Begomovirus in samples CI250 and CI251 collected in Bouaké locality. Several viruses, including *Pepper Yellow Mali Virus* (PepYMLV), are now attacking peppers in Côte d'Ivoire. A complete diagnosis of pepper viral diseases could help to better guide the fight against this pathogen.

DISCLAIMER (ARTIFICIAL INTELLIGENCE)

Author(s) hereby declare that NO generative AI technologies such as Large Language Models (ChatGPT, COPILOT, etc) and text-to-image generators have been used during writing or editing of this manuscript.

COMPETING INTERESTS

Authors have declared that no competing interests exist.

REFERENCES

1. Yarou GART, Onzo A. Mite and Insect pest fauna associated with the green pepper, *Capsicum chinense* Jacq. (Solanales: Solanaceae) in the municipalities of Kandi and Malanville in the Northern-Benin. *Annales de l'Université de Parakou Série « Sciences Naturelles et Agronomie »*. 2015;5(1):1-11.
2. Moreb N, O'Dwyer C, Jaiswal S, Jaiswal AK. Pepper. In *Nutritional composition and antioxidant properties of fruits and vegetables*. Academic Press. 2020;223-238.
3. Azlan A, Sultana S, Huei CS, Razman MR. Antioxidant, Anti-Obesity, Nutritional and Other Beneficial Effects of Different Chili Pepper: A Review. *Molecules*. 2022;27(3):898.
4. FAO. FAOSTAT Database. Food and Agriculture Organization, Roma, Italy. 2014;1-5. Available: www.fao.org.

5. FAO. Food and Agricultural Organisation. Available: [Http://faostat.fao.org/faostat](http://faostat.fao.org/faostat). 2012;2-4.
6. Kouassi C. Bioactive potentials and antimicrobial activity of pepper varieties (*Capsicum*) grown in Côte d'Ivoire. PhD thesis; Nangui Abrogoua University, Abidjan, Côte d'Ivoire. 2012;161.
7. Koffi AC, Koffi-N, Kouassi K, Loukou Y. Activity of extracts of six varieties of pepper (*Capsicum*) used in Côte d'Ivoire. Journal. Applied. Biosciences. 2014; 82:7379-7388.
8. Djinet AI, Nguinambaye MM, Ganon F, Kanga L. Effect of composted manure of cow dung, sheep excrement, poultry droppings (chickens and pigeons), dead straw and residues of local drink "Bilibili" on the agromorphological parameters of peppers (*Capsicum annuum* L.) grown on the sandy soil of Bongor in Chad. African Journal of Environment and Agriculture. 2023;6(4): 70-80.
9. Kouadio P. Diagnosis of pepper virus (*Capsicum spp.*) in the localities of Abidjan and Yamoussoukro. 2016;10-11.
10. Ryckebusch F. Characterization of the transmission of capulaviruses, geminiviruses of a new genus whose originality is transmission by aphids (Doctoral dissertation, Montpellier SupAgro). 2020;45-100.
11. Ouattara A. Molecular epidemiology of geminiviruses responsible for emerging diseases on market garden crops in Burkina Faso. Thesis, University of Reunion; University Ouaga 1, Ouagadougou, Burkina Faso. 2017;229.
12. Lava KP. Methods for the diagnosis of plant virus diseases. Laboratory manual. 2009;94.
13. Harry WJ, Bing-Yuan C. PCR Cloning Protocols. In: Molecular biology. 2nd ed. 2002;192:19.
14. Tiendrébéogo F, Traoré V, Lett J-M, Barro N, Konaté G, Traoré AS, Traoré O. Impact of okra leaf curl disease on morphology and yield of okra. Crop Protection. 2010; 29(7):712-716.
15. Ouffroukh A. Contribution to the knowledge of biotic stresses affecting winter cereals: Identification and approach to the epidemiological study of barley yellow dwarf viruses (BYDV) or barley yellow dwarf virus (BYDV) affecting cereal crops in eastern Algeria. Mentouri-Constantine University. 2014;1:22.
16. Séka K, N'cho JA, Assiri KP, Yao KF, Diallo HA. Medicinal plants of Côte d'Ivoire and viral infections: diagnosis of Begomovirus. International Journal of Agronomy and Agricultural Research. 2017;12(2):78-86.
17. Diallo HA, Gergerich RC, Anderson EJ. Partial molecular characterization of cowpea isolates of CMV and BICMV from Arkansas and Georgia. African Agronomy. 2004;16:59-69.
18. Delatte H, Reynaud B, Lett J M, Peterschmitt M, Granier M, Ravololonandrianina J, Goldbach R. First molecular identification of a begomovirus in Madagascar. Plant Disease. 2002; 86:1404.

Disclaimer/Publisher's Note: The statements, opinions and data contained in all publications are solely those of the individual author(s) and contributor(s) and not of the publisher and/or the editor(s). This publisher and/or the editor(s) disclaim responsibility for any injury to people or property resulting from any ideas, methods, instructions or products referred to in the content.

© Copyright (2024): Author(s). The licensee is the journal publisher. This is an Open Access article distributed under the terms of the Creative Commons Attribution License (<http://creativecommons.org/licenses/by/4.0>), which permits unrestricted use, distribution, and reproduction in any medium, provided the original work is properly cited.

Peer-review history:

The peer review history for this paper can be accessed here:

<https://www.sdiarticle5.com/review-history/123902>