

## Exocrine Pancreatic Cancer: A Clinico-epidemiologic Study

Hend Ahmed El-Hadaad<sup>1\*</sup>, Hanan Ahmed Wahba<sup>1</sup>, Waleed Abozeed<sup>1</sup>,  
Waleed Elnahas<sup>2</sup> and Sameh Roshdy<sup>2</sup>

<sup>1</sup>Department of Clinical Oncology and Nuclear Medicine, Mansoura University, Mansoura, Egypt.  
<sup>2</sup>Surgical Oncology Unit, Mansoura Oncology Center, Mansoura University, Mansoura, Egypt.

### Authors' contributions

This work was carried out in collaboration between all authors. Authors HAEH, HAW and WA designed the study, performed the statistical analysis, wrote the protocol and wrote the first draft of the manuscript. Author SR managed the analyses of the study. Author WE managed the literature searches. All authors read and approved the final manuscript.

### Article Information

DOI: 10.9734/JCTI/2018/31933

#### Editor(s):

- (1) Rafael Roesler, Cancer Research Laboratory, University Hospital Research Center, Federal University of Rio Grande do Sul, Brazil.
- (2) Bing Yan, Department of Oncology, Hainan Branch of PLA General Hospital, China.
- (3) Giulio Tarro, Professor, Foundation T. & L. de Beaumont Bonelli for Cancer Research, Napoli, Italy.

#### Reviewers:

- (1) Ghada zaghoul Abbass Soliman, National Nutrition Institute, Egypt.
  - (2) Hildegard M. Schuller, University of Tennessee, USA.
  - (3) Mario Bernardo-Filho, Universidade do Estado do Rio de Janeiro, Brazil.
  - (4) Somchai Amornyotin, Mahidol University, Thailand.
  - (5) Hideyuki Konishi, Kyoto Prefectural University of Medicine Graduate School of Medicine, Japan.
- Complete Peer review History: <http://www.science domain.org/review-history/23886>

Original Research Article

Received 5<sup>th</sup> January 2017  
Accepted 12<sup>th</sup> March 2018  
Published 30<sup>th</sup> March 2018

### ABSTRACT

**Background:** Incidence of pancreatic cancer is relatively low compared to other types of cancer but had the lowest survival rate of all cancers.

**Objective:** To describe clinical-epidemiological features of pancreatic cancer patients recorded in our region and assessed its different prognostic factors.

**Materials and Methods:** The medical records of patients with pancreatic cancer attended to Clinical Oncology, and Nuclear Medicine department and Oncology centre between 2005-2014 were reviewed.

**Results:** This retrospective study included 380 patients with exocrine pancreatic cancer. Median age was 56 years with male predominance (65%). The most predominant histologic type was adenocarcinoma with grade III in 55% of patients. Tumours were located at the head of the

\*Corresponding author: Email: [hend\\_am@mans.edu.eg](mailto:hend_am@mans.edu.eg);

pancreas were 75.5%, followed by the body (20.8%). Most patients presented with metastatic disease (57.9%). The pain was the most common presenting symptom (63.9%), while jaundice was found in 47.4% of patients. 23.7% of patients were smokers and 19.7% suffered from diabetes mellitus. 1-year survival rate was 28%. On multivariate analysis; we found significant lower survival rate with male gender (P=0.004), high-grade disease (P=0.002), older age (P=0.001), PC located in tail and body (P=0.006), high level of CA19-9(> 37U/L) (P=0.001), and metastatic cases (P=0.003).

**Conclusion:** This study is a clinical-epidemiologic survey of pancreatic cancer in our locality. However, because of its relatively small number of patients and retrospective nature; larger prospective studies are needed to study the epidemiologic and genetic basis of pancreatic cancer in our region.

**Keywords:** Pancreatic cancer; exocrine; chemotherapy; gemcitabine.

## 1. INTRODUCTION

The incidence of pancreatic cancer (PC) is relatively low compared to other types of cancer in 2012 is 2.4% worldwide [1]. In men, PC is the 11<sup>th</sup> most common cancer while the 9<sup>th</sup> in women and it is the 4<sup>th</sup> leading cause of cancer death in both sexes in the United States [2]. PC had the lowest survival rate of all cancers at both 1-year and 5 and ten years [3]. 94% of patients with PC die within five years of diagnosis, and 74% die within the first year [4]. This is attributed to the difficult diagnosis of PC in early stages; as at first presentation 52% of patients have distant metastasis and 26% have local spread disease [5]. Although PC can affect both exocrine and endocrine pancreas, 99% of tumours are exocrine [6]. Their many studies with variable results were conducted to identify prognostic factors of PC [7-9]. This study was conducted to describe clinical-epidemiological features of PC patients recorded in our region and assess different prognostic factors of PC.

## 2. MATERIALS AND METHODS

This study included all patients with pancreatic cancers presented to our department. The medical records of patients with PC attended to Clinical Oncology and Nuclear Medicine department and Oncology centre between 2005-2014 were reviewed. Patients with secondary malignancy were excluded. The study was approved by the Medical Ethics Committee.

Collected data included age, gender, grade, histology, site, stage and presenting symptoms of the disease. Risk factors for PC as diabetes mellitus, smoking, family history of PC and hypertension were also reviewed.

Overall survival was defined as the period between the date of diagnosis and date of death or last follow-up.

Variable prognostic factors for PC such as age, gender, site, grade, stage, site of the disease and CA19.9 were assessed for their significance through multivariate analysis.

## 2.1 Statistical Methods

The statistical package (SPSS version 15) was used. Data were expressed as number and percentage; Chi-square test was used for comparison of categorical variables, Kaplan-Meier test was used for survival function.

## 3. RESULTS

This retrospective study included 380 patients with exocrine PC. Their characteristics are shown in the Table 1. Median age was 56years with male predominance (65%). The most predominant histologic type was adenocarcinoma with grade III in 55% of patients. Tumours were located at the head of the pancreas in most of the cases (75.5%), where tumours of the body presented in (20.8%). Most patients were presented with metastatic disease (57.9%). The pain was the most common presenting symptom (63.9%), while jaundice was found in 47.4% of patients. 23.7% of patients were smokers and 19.7% suffered from diabetes mellitus. Pancreatitis was recorded in a small percent of cases (8%) that is one of the disadvantages of retrospective nature of the study.

Chemotherapy was administered in 35% of patients. Gemcitabine was the most common agent used (77%) followed by cisplatin (15%), and capecitabine (8%).

1-year survival rate was 28% (Fig. 1) with a median survival time of 7 months (95% CI: 5.961-8.039).

On multivariate analysis we found significant lower survival rate with male gender (P=0.004), high-grade disease (P=0.002), older age (P=0.001), PC located in tail and body (P=0.006), high level of CA19-9(> 37U/L) (P=0.001), and metastatic cases (P=0.003) Table 2.

**Table 1. Demographic data of studied patients**

Character	N0	%
<b>Age</b>		
Median 56(38-70)y		
≤60y	228	60
>60y	152	40
<b>Gender</b>		
Male	247	65
Female	133	35
<b>Site</b>		
Head	287	75.5
Body	79	20.8
Tail	14	3.7
<b>Grade</b>		
I	78	20.5
II	93	24.5
III	209	55
<b>Pathological type</b>		
Adenocarcinoma	364	95.8
Others	16	4.2
<b>Disease presentation</b>		
Resectable	35	9.2
Locally advanced	125	32.9
Metastatic	220	57.9
<b>Risk factors</b>		
Diabetes mellitus	75	19.7
Smoking	90	23.7
Hypertension	45	11.9
Family history	33	8.6
<b>CA19.9</b>		
≤37U/L	130	34.2
>37U/L	250	65.8
<b>Presenting symptoms</b>		
Pain	243	63.9
Jaundice	180	47.4
Vomiting	142	37.4
Weight loss	118	31
Anorexia	64	16.8

#### 4. DISCUSSION

PC is considered a major health problem due to associated high mortality rates [10]. In our study, the 1-year survival rate was 28%. This lower survival rate can be explained by the late diagnosis of the disease as it remains asymptomatic for a long period due to the anatomic deeper site of the pancreas, this

advanced stage of diagnosis make therapeutic approach has a low rate of success [11]. The majority of our patients were presented with metastatic disease (58%).

**Table 2. Multivariate analysis of variables affecting survival**

Variables	No. (%)	P
<b>Age</b>		
≤60 year	180(79%)	0.001
>60 year	70(46%)	
<b>Gender</b>		
Male	140(56.5%)	0.004
Female	100(75%)	
<b>The site of the tumour</b>		
Head	170(59%)	0.006
Body and Tail	40(43%)	
<b>Grade</b>		
III	160(76.5%)	0.0002
I-II	100(58.5%)	
<b>Metastasis</b>		
No	110(68.8%)	0.0003
Yes	110(50%)	
<b>CA 19-9</b>		
≤37 U/L	110(84.6%)	0.001
>37 U/L	150(60%)	

In the present study, median age was 56 years which is lower than that reported in both Saudi Arabia (63 y) [12] and the United States (72 y) [13], this may be due to overall younger population pool in Egypt or different biology of cancer. However, studies reported that incidence of PC increase with advancing age with a steep increase after the age of 50 y [14-16].

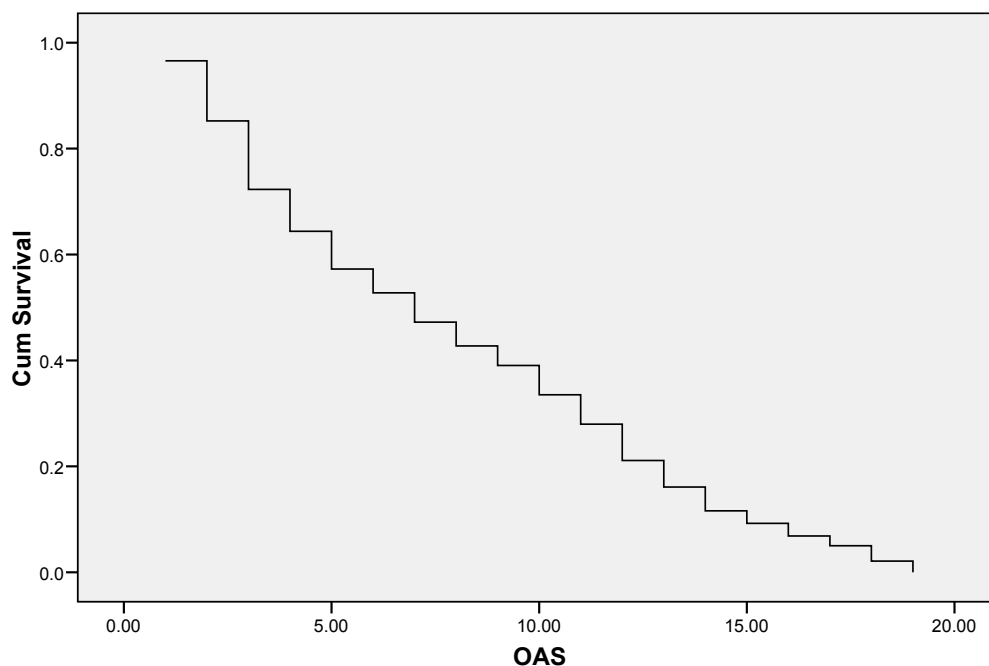
We found male predominance for PC, that is confirmed in other studies [17-19]. This higher rate in males can be explained by increase tobacco smoking and more prevalence of diabetes mellitus in males than females above the age of 25 [20].

Our results revealed that about two-thirds of PC occurred at the head of the pancreas that matches with other studies [21,22].

We found that adenocarcinoma was the most recorded histologic type that is by the literature [2,15].

It was reported that tobacco smoke contains about 69 chemicals can cause cancer as Arsenic, Cadmium, Nickel, Ethylene oxide [23] and the tobacco-specific nitrosamines NNK and NNN. So cigarette smokers are at higher risk for

### Survival Function



**Fig. 1. Overall survival (OAS) among studied patients**

developing PC compared with the non-smokers and this risk increases with increasing amount of pack-year smoked [24]. However, cessation of smoking may reduce this risk [25]. In our study, 24% of our patients were smokers. The other correlation found was the one between PC and diabetes mellitus and this result agrees with other studies [26-29]. This relation can be explained by the theory that hyperinsulinemia favours the occurrence of PC as insulin has not only metabolic effect but also has a mitogenic one [30]. Also, insulin-mediated mitogenesis can be stimulated by some medications used for the treatment of diabetes mellitus [31,32].

Most of our patients presented with abdominal pain followed by jaundice; this can prolong the interval between the onset of symptoms and the treatment as reported in the literature [33].

We found that age and stage of the disease are significant prognostic factors for survival that is supported by other studies [7,9]. Elevated CA 19-9 was found to be associated with an advanced stage, so this can explain the correlation between its high level and poorer survival as reported by Hartwig W et al. [34]. This is similar to our finding.

In our study, a pancreatic tumour located in the body had a poorer survival. It was reported that pancreatic tumours of the body have a higher risk of 11% mortality compared to the cephalic region with a higher degree of metastasis [21].

Among variable prognostic factors, authors report histologic grade as a significant predictor of survival [35-37]. This made Elton et al. devised a cytologic grading system for biopsy specimens obtained by endoscopic ultrasound-guided fine needle aspiration in patients with PC to help prediction of survival [38]. One possible aetiology of poorer survival in males than females is the presence of lower grade tumours in females [39,40].

Our study had some limitations like relatively small number of patients and retrospective nature.

As pancreatic cancer is genetically very complex with a high diversity of mutations, early diagnosis with the new protein markers may lead to early intervention and better prognosis [41]. Molecular markers are important not only because they can offer a better understanding of clinical outcome, but also because it can guide the research for

new molecular-based therapies Germline mutations of p16INK4A/p14ARF locus is a characteristic genetic alteration observed in >80% of PC. This locus encodes for two related, and partially overlapping, suppressor genes. Several studies confirmed the role of p16 expression as a prognostic factor in PDAC [42,43].

In particular, a lower survival has been observed in patients with p16 mutations or hypermethylation.

## 5. CONCLUSION

Our study is a clinical-epidemiologic survey of pancreatic cancer in our locality. However, because of its relatively small number of patients and retrospective nature; larger prospective studies are needed to study the epidemiologic and genetic basis of pancreatic cancer in our region. This study investigated the association between clinicopathological parameters, treatment selection, and laboratory tests data with the prognosis of patients with pancreatic cancer and so; can guide future clinical practice in the management of pancreatic cancer patients. However, studies of molecular prognostic factors are needed to help choice of proper treatment.

## CONSENT

It is not applicable.

## ETHICAL APPROVAL

As per international standard or university standard, written approval of Ethics committee has been collected and preserved by the author(s).

## COMPETING INTERESTS

Authors have declared that no competing interests exist.

## REFERENCES

1. International Agency for Research on Cancer (IARC). Available:[http://globocan.iarc.fr/Pages/factsheets\\_population.aspx](http://globocan.iarc.fr/Pages/factsheets_population.aspx) [Cited in 12.03.2015]
2. American Cancer Society. Cancer Facts & Figures. Atlanta: American Cancer Society; 2014.
3. Quaresma M, Coleman MP, Rachet B. 40-year trends in an index of survival for all cancers combined and survival adjusted for age and sex for each cancer in England and Wales. 1971-2011: A population-based study. *Lancet*. 2015;1206-1218.
4. American Cancer Society. Cancer Facts & Figures 2014 and NCI Annual Plan & Budget For Year 2012; 2014.
5. American Cancer Society. Cancer Facts & Figures. Atlanta: American Cancer Society; 2008.
6. Frank Gaillard. Pancreatic neoplasms. Available:<http://radiopaedia.org/articles/pancreatic-neoplasms> [Cited in 03.03.2015]
7. Park JK, Yoon YB, Kim YT, et al. Survival and prognostic factors of unresectable pancreatic cancer. *J Clin Gastroenterol*. 2008;42:86-91.
8. Eloubeidi MA, Desmond RA, Wilcox CM, et al. Prognostic factors for survival in pancreatic cancer: A population-based study. *Am J Surg*. 2006;192:322-9.
9. Weber A, Kehl V, Mittermeyer T, et al. Prognostic factors for survival in patients with unresectable pancreatic cancer. *Pancreas*. 2010;39:1247-53.
10. Popescu-Valceanu HC, Nan R, Dragut R, et al. Pancreatic cancer: Epidemiology and risk factors. *Proc Rom Acad., Series B*. 2015;17:117-24.
11. Available:<http://www.cancerresearchuk.org/cancer-info/cancerstats/types/pancreas/survival/pancreatic-cancer-survival-statistics#source6> [Cited in 15.03.2015]
12. AlGhamdi HJ, Alfaifi SA, Alolayan AA, et al. Pancreatic cancer in Saudi patients treated at tertiary institution. Ten years retrospective study. *Saudi Med J*. 2013;34:604-8.
13. Howlader N, Noone AM, Krapcho M, et al, Editors. SEER Cancer Statistics Review 1975-2008 National Cancer Institute. Bethesda (MD): National Cancer Institute; 2011.
14. DevCan: Probability of Developing or Dying of Cancer Software, Version 6.6.1. Statistical Research and Applications Branch, National Cancer Institute; 2012.
15. Mouaqit O, El Alami F, Chourak M, et al. Le cancer de la tête du pancréas vu aux urgences: Aspects cliniques et thérapeutiques. *J Afr Cancer*. 2009;4:217-22.

16. Soufi M, Bensaid M, Benamr S, et al. Quelle est la place de la chirurgie dans l'adénocarcinome pancréatique localement évolué? *J Afr Cancer*. 2010;2:98-103.
17. World Health Organization Classification of Tumours. International Agency for Research on Cancer (IARC). Pathology and Genetics of Tumours of the Digestive System Edited by Stanley R. Hamilton Lauri A. Aaltonen. 2000;221.
18. SEER Incidence & U.S. Mortality 1975-2011, All Races, Both Sexes. Rates are Age-Adjusted. Available:<http://seer.cancer.gov/statfacts/html/pancreas.html> [Cited in 15.03.2015]
19. Al-Majed HT, El-Basmi AA, Al-Mohannadi SH, et al. Pancreatic cancer: Incidence, clinical profile and frequency of associated factors in Kuwait. *Alexandria Journal of Medicine*. 2013;49:75-80.
20. Dorman JS, LaPorte RE, Songer TJ, et al. Epidemiology of type 1 diabetes, in type 1 diabetes: Etiology and treatment. Mark A. Sperling, Editor, Humana Press: Totowa, NJ. 2003;3-22.
21. Avo Artinyan, Perry A. Soriano, Christina Prendergast, et al. The anatomic location of pancreatic cancer is a prognostic factor for survival HPB (Oxford). 2008;371-6.
22. Lau MK, Davila JA, Shaib YH. Incidence and survival of pancreatic head and body and tail cancers: A population-based study in the United States. *Pancreas*. 2010;39: 458-62. PMID: 19924019
23. Available:<http://www.cancer.gov/cancertopics/causes-prevention/risk/tobacco/cessation-factsheet> [Cited in 05.03.2015]
24. Bosetti C, Lucenteforte E, Silverman DT, et al. Cigarette smoking and pancreatic cancer: An analysis from the International Pancreatic Cancer Case-Control Consortium (Panc4). *Ann Oncol*. 2012;23: 1880-8.
25. Zou L, Zhong R, Shen N, et al. Non-linear dose-response relationship between cigarette smoking and pancreatic cancer risk: evidence from a meta-analysis of 42 observational studies. *Eur J Cancer*. 2014;50:193-203.
26. Jemal A, Simard EP, Dorell C, et al. Annual Report to the Nation on the Status of Cancer, 1975-2009. Featuring the burden and trends in HPV-associated cancer and HPV vaccination coverage levels. *J Natl Cancer Inst*. 2013;105:175-201. PMID: 23297039
27. Pannala R, Leirness JB, Bamlet WR, et al. Prevalence and clinical profile of pancreatic cancer-associated diabetes mellitus. *Gastroenterology*. 2008;134:981-7.
28. Kelly GS. Insulin resistance: Lifestyle and nutritional interventions. *Altern Med Rev*. 2000;5:109-32. PMID: 10767668
29. Sievenpiper JL, Jenkins AL, Whitham DL. Insulin resistance: Concepts, controversies, and the role of nutrition. *Can J Diet Pract Res*. 2002;63:20-32. PMID: 11916461
30. Vigneri P, Frasca F, Sciacca L, et al. Diabetes and cancer. *Endocr Relat Cancer*. 2009;16:1103-1123. PMID: 19620249
31. Giovannucci E, Harlan DM, Archer MC, et al. Diabetes and cancer: A consensus report. *Diabetes Care*. 2010;33:1674-85. PMID: 20587728
32. Smith U, Gale EA. Does diabetes therapy influence the risk of cancer? *Diabetologia*. 2009;52:1699-708. PMID: 195 97799
33. Watanabe I, Sasaki S, Konishi M, et al. Onset symptoms and tumor locations as prognostic factors of pancreatic cancer. *Pancreas*. 2004;28:160-165.
34. Hartwig W, Strobel O, Hinz U, et al. CA19-9 in potentially respectable pancreatic cancer: Perspective to adjust surgical and perioperative therapy. *Ann Surg Oncol*. 2013;20:2188-96. Epub 2012.
35. Winter JM, Cameron JL, Campbell KA, et al. 1423 pancreaticoduodenectomies for pancreatic cancer: A single-institution experience. *J Gastrointest Surg*. 2006;10: 1199-210.
36. Benassai G, Mastrorilli M, Quarto G, et al. Factors influencing survival after resection for ductal adenocarcinoma of the head of the pancreas. *J Surg Oncol*. 2000;73:212-8.
37. Gebhardt C, Meyer W, Reichel M, et al. Prognostic factors in the operative treatment of ductal pancreatic carcinoma. *Langenbecks Arch Surg*. 2000;385:14-20.
38. Eltoun IA, Eloubeidi MA, Chhieng DC, et al. Cytologic grade independently predicts

- survival of patients with pancreatic adenocarcinoma. *Am J Clin Pathol.* 2005;124:697-707.
39. Bilimoria KY, Bentrem DJ, Ko CY et al. Validation of the 6<sup>th</sup> edition AJCC pancreatic cancer staging system: A report from the National Cancer Database. *Cancer.* 2007;110:738-44.
40. Bernnan MF, Kattan MW, Klimstra D, et al. Prognostic nomogram for patients undergoing resection for adenocarcinoma of the pancreas. *Ann Surg.* 2004;240:293-8.
41. Weledji EP, Enoworock G, Mokake M, et al. How grim is pancreatic cancer? *Oncol Rev.* 2016;10:294.
42. Gerdes B, Ramaswamy A, Ziegler A, et al. p16INK4a is a prognostic marker in resected ductal pancreatic cancer: An analysis of p16INK4a, p53, MDM2, an Rb. *Annals of Surgery.* 2002;235:51–9.
43. Jong J, Park YN, Park JS, et al. Clinical significance of p16 protein expression loss and aberrant p53 protein expression in pancreatic cancer. *Yonsei Medical Journal.* 2005;46:519–25.

---

© 2018 El-Hadaad et al.; This is an Open Access article distributed under the terms of the Creative Commons Attribution License (<http://creativecommons.org/licenses/by/4.0>), which permits unrestricted use, distribution, and reproduction in any medium, provided the original work is properly cited.

*Peer-review history:*  
*The peer review history for this paper can be accessed here:*  
<http://www.sciencedomain.org/review-history/23886>